



INTEGRA REALTY RESOURCES

IRR | ST. LOUIS

COMMERCIAL REAL ESTATE
VALUATION & CONSULTING



35+

years serving U.S. markets

IRR® — INTEGRA REALTY RESOURCES —

provides world-class commercial real estate valuation and counseling services to both local and national top financial institutions, developers, corporations, law firms, and government agencies. As one of the largest independent property valuation and counseling firms in the United States, we provide our diverse array of clients the highly informed opinions and trusted expert advice needed to understand the value, use and feasibility of their real estate. ***IRR. Local expertise. Nationally.***

27,000

appraisals completed
annually

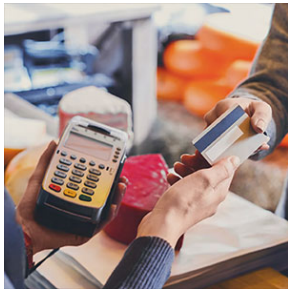
RECENT APPRAISAL ASSIGNMENTS OF NOTABLE AND VARIED ASSETS

Office



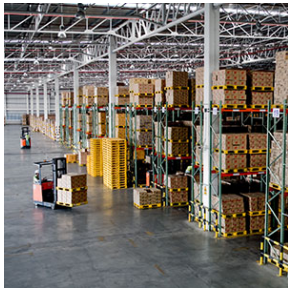
- Chesterfield, MO – Portfolio of 13 office properties (Class A & B)
- Mission, KS – Portfolio of 12 office properties (Class A & B)
- O’Fallon, MO – 69,377 sf Class A office/research and development
- Wichita, KS – Portfolio of 2 Class B medical office properties
- St. Louis, MO – 87,040 sf renovated office with retail addition

Retail



- Warrenton, MO – 82,864 sf free-standing new construction retail
- Creve Coeur, MO – 22,247 sf retail/office center
- Wildwood, MO – 26,889 sf Class A retail center
- Central/Southern MO – Portfolio of 17 retail bank branches
- Creve Coeur, MO – 74,859 sf Shopping Center on 6.69 acres
- St. Peters, MO – 100,861 sf retail Community Center

Industrial



- Kansas City, MO – 39,204 sf Class B office/flex
- Overland, MO – 191,128 sf Class B office/flex
- Green Park, MO – Portfolio of 4 office/warehouse and specialty industrial
- Columbia, MO – 55,793 Class A office/flex
- Greater Kansas City, MO/KS – Portfolio of 6 Class A/Class B distribution

Multifamily/Hospitality



- Clayton, MO – Portfolio of 3 renovated apartment properties
- Overland Park, KS – 232 Unit Class B Apartment Complex
- Carbondale, IL – 180 unit/492-bedroom Class A student housing apartments
- St. Louis, MO – 300-unit Class B renovated apartments
- High Ridge, MO – Proposed Class A 200-unit apartments
- Columbia, MO – 114 room hotel with proposed expansion

OUR VALUE PROPOSITION

What sets our firm apart is the longevity of our principals and senior analysts who have been collaborating on property analyses for over 25 years. Through developing our team relationships, our specialty appraisal practices have evolved to create high quality, industry-leading standards. Over this 25+ year relationship, our staff has evolved into specialty appraisal practices. One staff member appraises apartments, another large shopping centers, another office buildings, another industrial buildings; we even have a staff member that appraises churches.



Bradley J. Schopp, MAI

Mr. Schopp is the Executive Director with Integra Realty Resource - St. Louis / Kanas City. Mr. Schopp also leads Integra's skilled nursing practice. He has completed more than 900 seniors housing and healthcare assignments in 37 states with asset values totaling more than \$8.5 billion. Prior to joining Integra, Mr. Schopp was a partner at Tellatin, Inc. Mr. Schopp also has experience in general commercial properties and was previously employed as a general commercial appraiser at Moore & Shryock in Columbia, Missouri



Timothy M. Schoemehl, MAI

Mr. Schoemehl brings over 15 years of general commercial appraisal experience and 20 years of real estate experience to his role as Senior Managing Director of the IRR-St. Louis office. He has appraised a wide variety of property types including multifamily, office, retail, special purpose, and redevelopment. Prior to entering the appraisal profession, Mr. Schoemehl was Real Estate Specialist for the St. Louis Development Corporation.



Brock A. Heyde, MAI

Mr. Heyde is Senior Managing Director of the IRR - Kansas City office. He has over 12 years' experience in the appraisal industry and an additional four years in commercial lending/appraisal review. Although Mr. Heyde specializes in hotel valuation, he has extensive experience in all property types including retail, office, industrial, and multi-family, as well as special purpose properties including religious facilities, golf courses, movie theatres, and car washes. He additionally serves on the Board of Directors of the Kansas City Chapter of the Appraisal Institute and recently attended the Appraisal Institute's Leadership Development and Advisory Council (LDAC) in Washington D.C.



Alisha M. Gammon, MAI

Ms. Gammon is a Managing Director at Integra Realty Resources - St. Louis. Ms. Gammon has over twelve years of experience in the commercial real estate field. She has worked with companies such as Wells Fargo, C III Asset Management, Regions Bank, and US Bank. She has vast expertise in valuations and fair market rent studies on proposed, partially completed, renovated and existing structures. She has worked with a variety of clients including life insurance companies, attorneys, and major commercial banks.



Victor D. Cremeens, MAI

Mr. Cremeens serves as Managing Director. He has exclusively appraised healthcare and senior housing properties since 2000. Prior to specializing in the healthcare and senior housing field, he appraised general commercial real estate for a period of 15 years. His appraisal assignments included a broad variety of property types, including: retail, office, industrial, hotel, special-purpose, agricultural, and land-in-transition properties. He has completed multiple subdivision analyses and condemnation appraisal assignments.

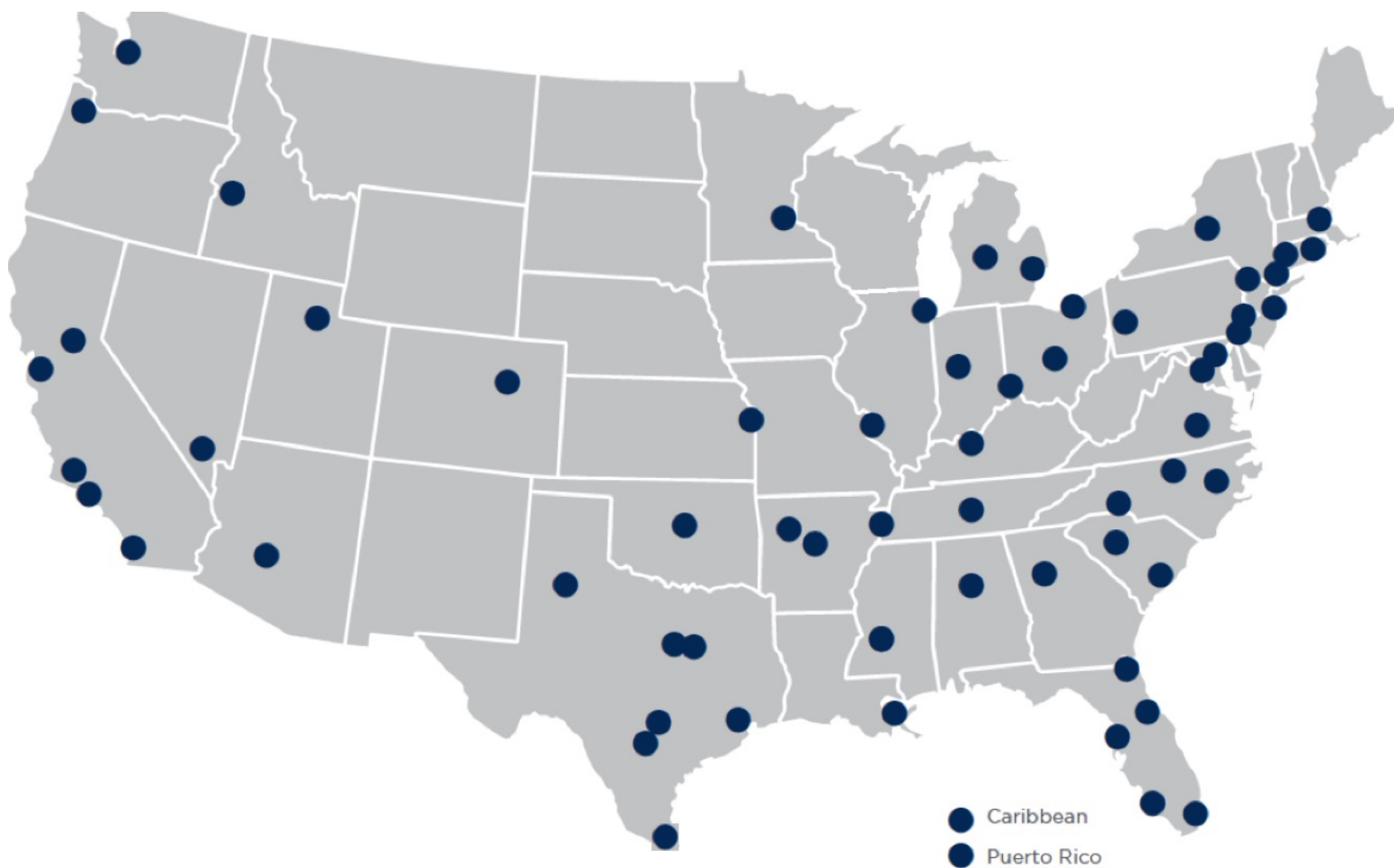
LOCAL EXPERTISE. NATIONALLY.

50+

local offices

60+

markets covered U.S. and Caribbean



NORTHEAST OFFICES

CONNECTICUT

Hartford, CT
Todd Isaacson, MAI
T (860) 291-8997 ext. 19
tisaacson@irr.com

NEW JERSEY

Coastal New Jersey
Halvor J. Egeland, MAI
T (732) 244-7000 ext. 103
hegeland@irr.com

Northern New Jersey
Paul T. Beisser, CRE, MAI, SCGRE
T (973) 422-9800
pbeisser@irr.com

NEW YORK

Syracuse, NY
William J. Kimball, MAI, FRICS
T (315) 422-5577
wkimball@irr.com

PENNSYLVANIA

Philadelphia, PA
Raja P. Waran, MAI
T (610) 238-0238
rwaran@irr.com

Pittsburgh, PA
Brian Kelly, MAI, SRA
T (412) 683-2211
bkelly@irr.com

RHODE ISLAND

Providence, RI
Todd Isaacson, MAI
T (860) 291-8997 ext. 19
tisaacson@irr.com

SOUTHEAST OFFICES

ALABAMA

Birmingham, AL
Rusty Rich, MAI, MRICS
T (205) 949-5995
r-rich@irr.com

FLORIDA

Miami | Caribbean
James Andrews, MAI, CRE, FRICS, ASA/BV
T (305) 670-0001 ext. 320
jandrews@irr.com

Orlando, FL
Christopher D. Starkey, MAI
T (407) 843-3377 ext. 112
cstarkey@irr.com

Southwest Florida
Carlton J. Lloyd, MAI
T (239) 687-5801
clloyd@irr.com

Tampa, FL
Kendra Stevens Barry
T (813) 287-1000 ext. 110
kbarry@irr.com

GEORGIA

Atlanta, GA
Matthew Albigese, MAI
T (404) 418-4358 ext. 1000
malbigese@irr.com

NORTH CAROLINA

Charlotte, NC
John D. Scott, Jr., MAI, MRICS
T (704) 206-8258
jscott@irr.com

Greensboro, NC
Nancy B. Tritt, MAI, SRA, FRICS
T (336) 676-6033
ntritt@irr.com

Raleigh, NC
Chris R. Morris, MAI, FRICS
T (919) 847-1717
cmorris@irr.com

SOUTH CAROLINA

Charleston, SC
Cleveland "Bud" Wright, Jr., MAI
T (843) 718-2125 ext. 10
cwright@irr.com

Columbia, SC
Michael B. Dodds, MAI, CCIM
T (803) 772-8282 ext. 110
mdodds@irr.com

TENNESSEE

Nashville, TN
Paul Perutelli, MAI, SRA, FRICS
T (615) 628-8275 ext. 1
pperutelli@irr.com

VIRGINIA

Richmond, VA
Kenneth L. Brown, MAI, FRICS, CCIM
T (804) 346-2600 ext. 209
kbrown@irr.com

CENTRAL OFFICES

ILLINOIS

Chicago, IL
Ron DeVries, MAI, FRICS
T (312) 565-3432
rdevries@irr.com

INDIANA

Indianapolis, IN
Michael Lady, MAI, SRA, ASA, CCIM, FRICS
T (317) 546-4720
mlady@irr.com

KENTUCKY

Louisville, KY
Stacey S. Nicholas, MAI, MRICS
T (502) 452-1543 ext. 3774
snicholas@irr.com

MICHIGAN

Detroit, MI
Donald L. Selvidge, MAI
T (248) 540-0040 ext. 114
dselvidge@irr.com

Grand Rapids, MI
Jeff Genzink, MAI
T (616) 261-5000
jgenzink@irr.com

MINNESOTA

Minneapolis/St. Paul, MN
Michael Amundson, MAI, CCIM
T (952) 905-2401
mamundson@irr.com

MISSOURI

Kansas City, MO
Brock A. Heyde, MAI
T (816) 652-0222
bheyde@irr.com

St. Louis, MO
Timothy M. Schoemehl, MAI
T (636) 898-6533
tschoemehl@irr.com

OHIO

Cincinnati/Dayton, OH
Gary S. Wright, MAI, FRICS, SRA
T (513) 426-7125
gwright@irr.com

Cleveland, OH
Douglas P. Sloan, MAI
T (330) 659-3640 ext. 101
dsloan@irr.com

Columbus, OH
Brad A. Johnson, MAI
T (614) 398-4307
bajohnson@irr.com

SOUTHWEST OFFICES

ARIZONA

Phoenix, AZ
Walter "Tres" Winus, III, MAI, FRICS
T (602) 266-5599
twinius@irr.com

OKLAHOMA

Oklahoma City, OK
Richard Cole, Jr., MAI
T (405) 422-0718 ext. 2
richard.cole@irr.com

TEXAS

Austin, TX
Todd Rotholz, MAI
T (713) 973-0212 ext. 12
trotholz@irr.com

Dallas, TX
Jimmy H. Jackson, MAI
T (972) 725-7724
jhjackson@irr.com

Ft. Worth, TX
Alan Pursley, MAI, SRPA, SRA, SGA
T (817) 763-8023
apursley@irr.com

Houston, TX
Todd Rotholz, MAI
T (713) 973-0212 ext. 12
trotholz@irr.com

Lubbock, TX
Taylor Carmona
T (409) 656-5199
taylor.carmona@irr.com

San Antonio, TX
Brandon Brehm, MAI, CCIM
T (210) 446-4444
bbrehm@irr.com

WEST OFFICES

CALIFORNIA

Los Angeles, CA
John G. Ellis, MAI, CRE, FRICS
T (818) 290-5444
jellis@irr.com

Orange County
J. Richard Donahue, MAI
T (714) 665-6515
rdonahue@irr.com

Sacramento, CA
Kevin Ziegenmeyer, MAI
T (916) 435-3883 ext. 224
kziegenmeyer@irr.com

San Diego, CA
John A. Morgan, MAI
T (858) 259-4900 ext. 315
jmorgan@irr.com

San Francisco, CA
Jeffrey Fillmore, MAI
T (408) 299-0444
jfillmore@irr.com

COLORADO

Denver, CO
Larry B. Close, MAI
T (720) 833-5931
lclose@irr.com

IDAHO

Boise, ID
Bradford Knipe, MAI, ARA, CRE, CCIM, FRICS
T (208) 472-3200
bknipe@irr.com

NEVADA

Las Vegas, NV
Charles E. Jack, IV, MAI
T (702) 906-0480
cjack@irr.com

UTAH

Salt Lake City, UT
John T. Blanck, MAI, MRICS
T (801) 263-9700 ext. 109
jblanck@irr.com

WASHINGTON

Seattle, WA
Matthew A. Bacon, MAI
T (206) 436-1179
mbacon@irr.com

CARIBBEAN

Caribbean
James Andrews, MAI, CRE, FRICS, ASA/BV
T (844) 952-7604 ext. 402
jandrews@irr.com

Puerto Rico

Carlos Vélez, MAI, SRA, BCA, CMEA, CCIM, MRICS
T (787) 782-4974
cvelez@irr.com

INTEGRA REALTY RESOURCES - ST. LOUIS

16759 Main Street, Suite 209
St. Louis, MO 63040
T: (636) 898-6533
F: (636) 530-0046
irr.com/StLouis

Timothy M. Schoemehl, MAI
Senior Managing Director
T (636) 898-6533
tschoemehl@irr.com

Bradley J. Schopp, MAI
Executive Director
T (636) 821-5310
bschopp@irr.com

irr.com

Visit us online to learn more
and access our extensive
research library.



INTEGRA REALTY RESOURCES
Local Expertise. Nationally.